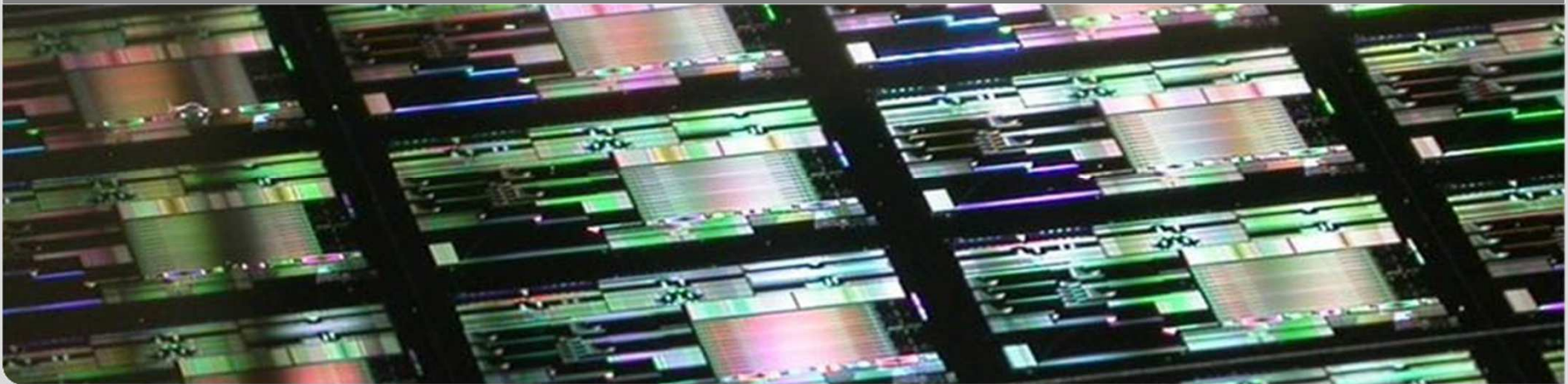


NAVOLCHI TeleConf. 03.09.2012

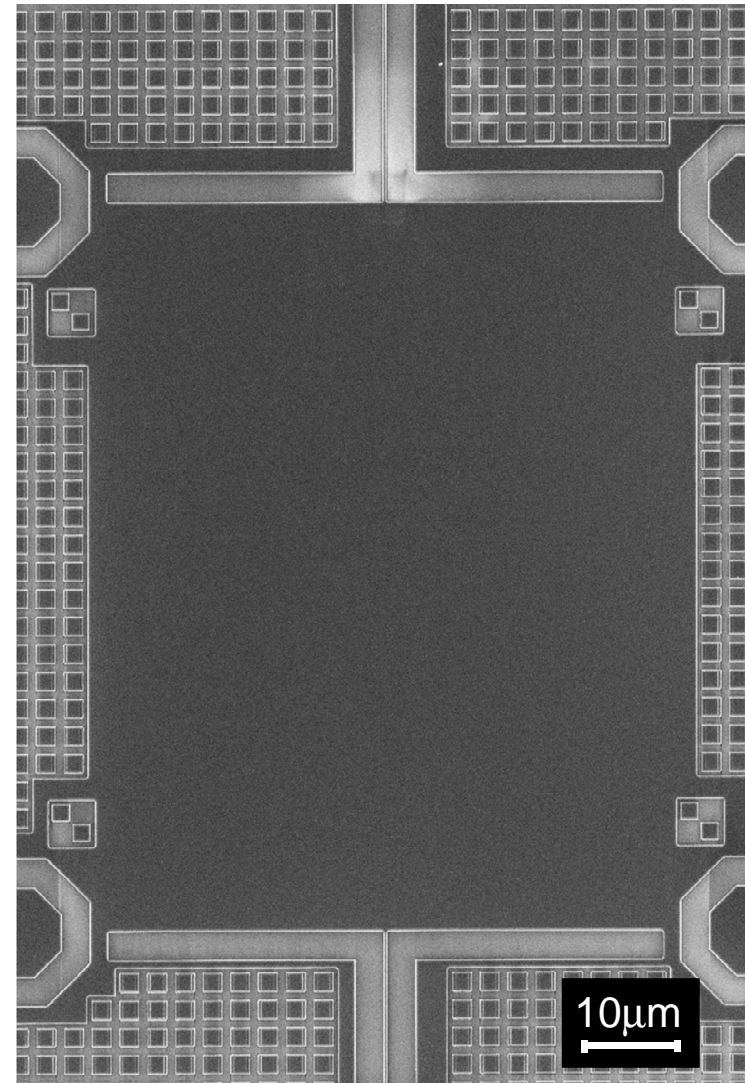
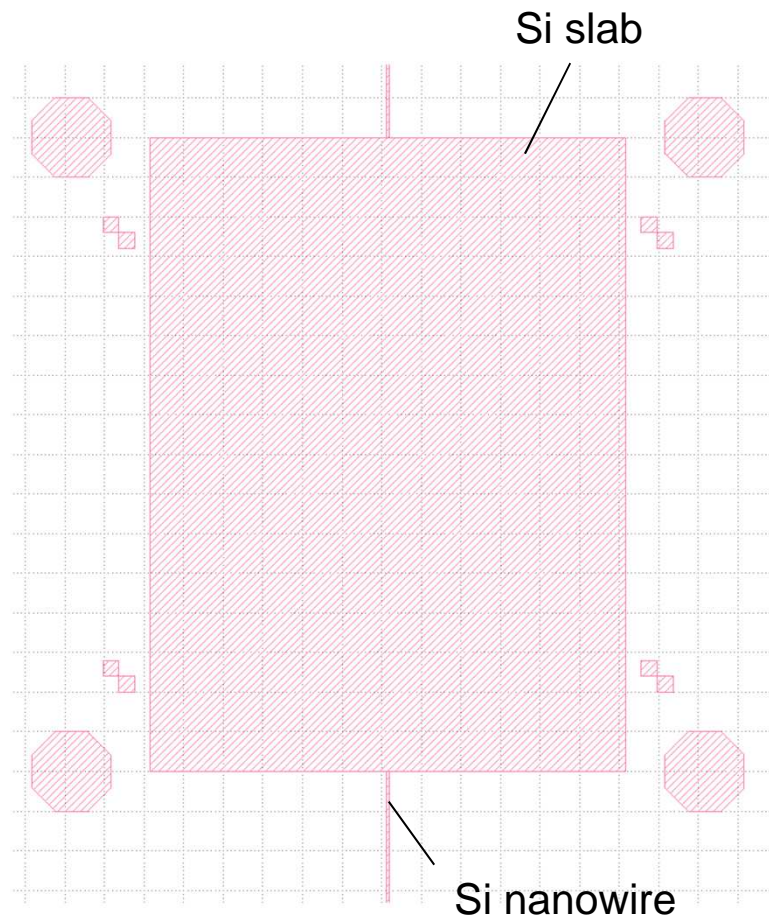
Institute of Photonics and Quantum Electronics (IPQ), Karlsruhe, Germany
Institute of Microstructural Technology, Karlsruhe, Germany



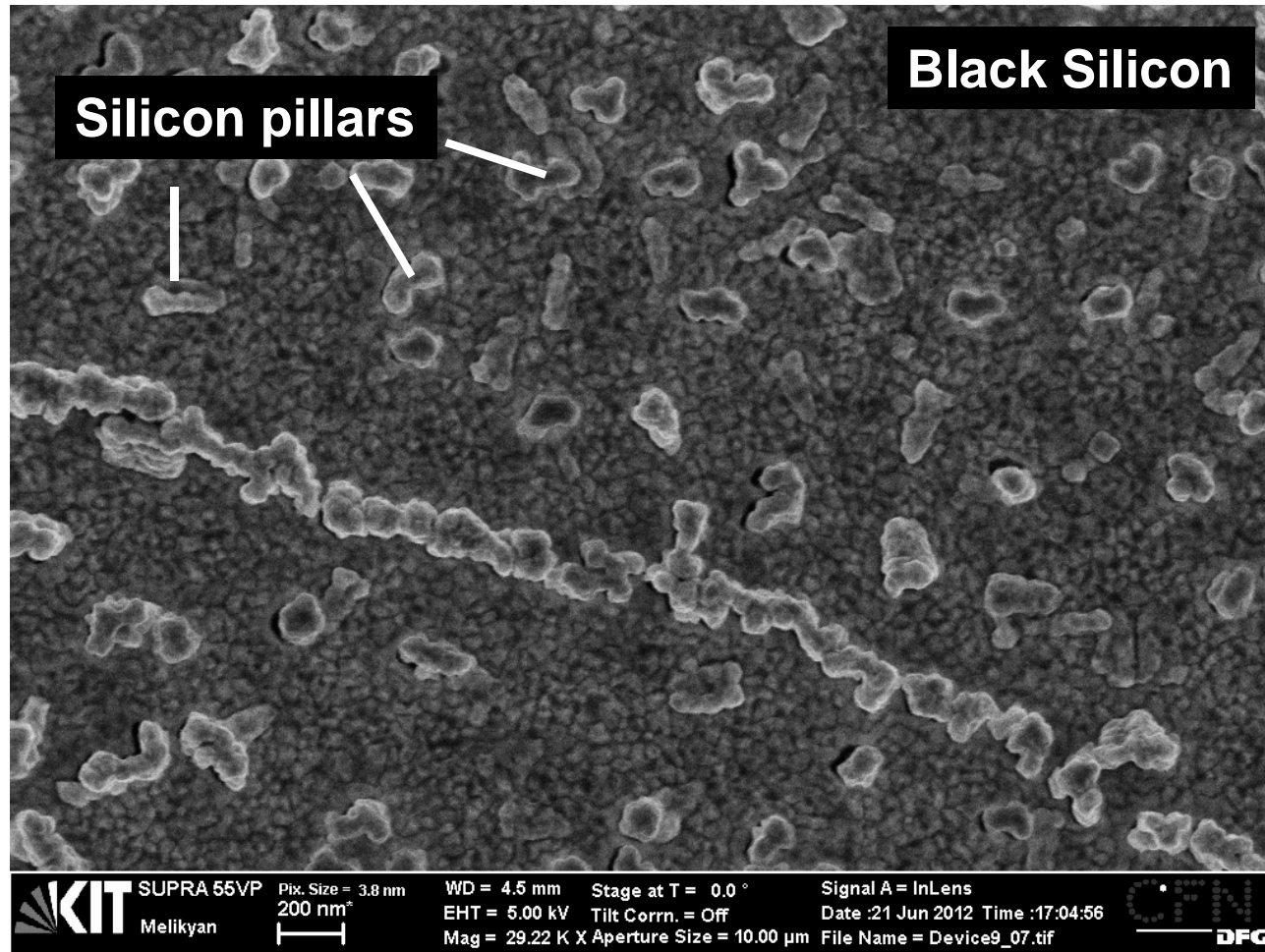
Current Activities / from last TelConf.

NAVOLCHI1 at IMEC10 run

Design Layout

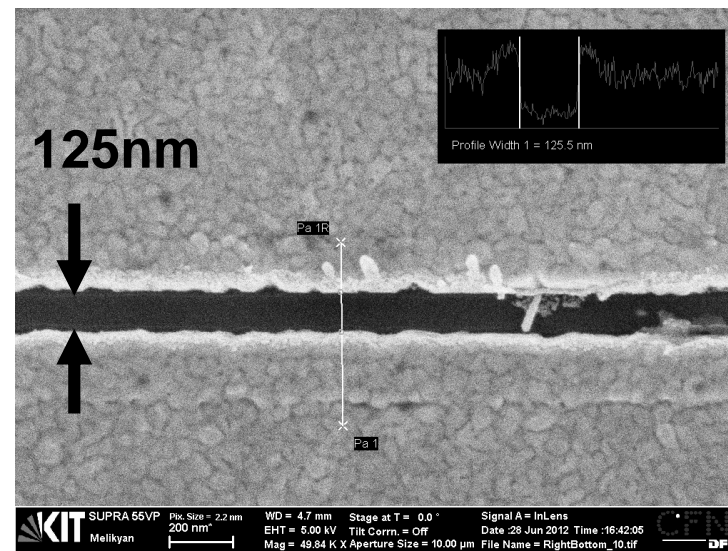
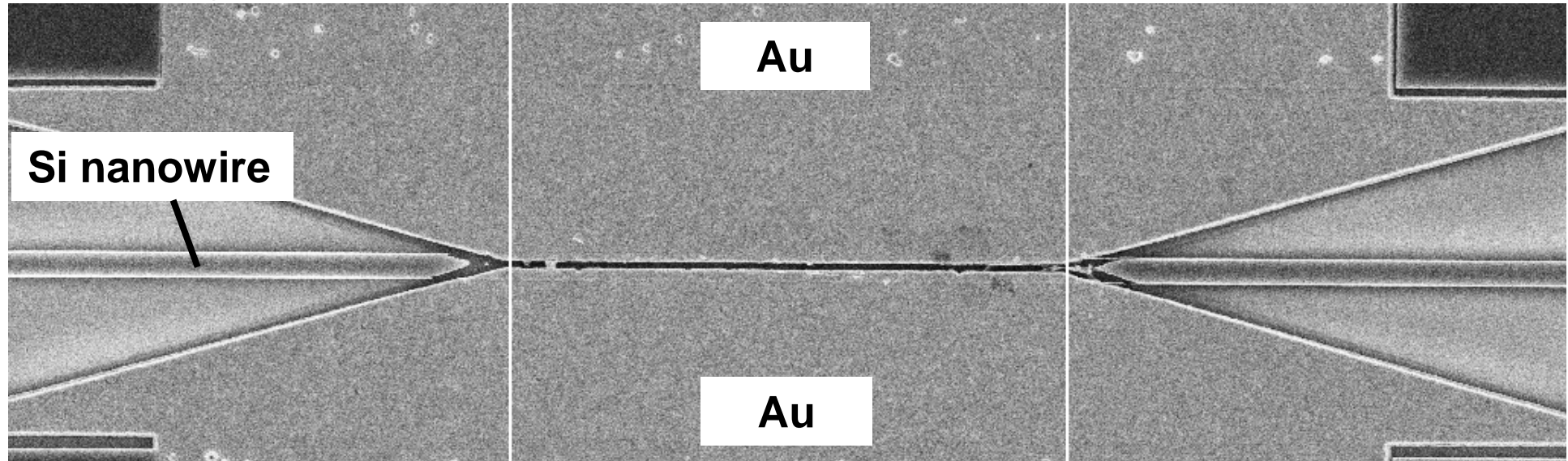


Silicon Nanowire Etching on NAVOLCHI 1



Phase Modulator

SEM image of the device



Next Steps

- Optimizing the Si etching process
- Fabrication of an array of devices on NAVOLCHI 1 chip
- Characterization of propagation losses and coupling losses